

LETHBRIDGE REGIONAL

POLICE

SERVICE

"providing safe communities"

2013
ANNUAL REPORT



TABLE OF CONTENTS

Message from Chief Tom McKenzie	3
Lethbridge Regional Police Service History.....	4
Mission, Vision and Values	4
Lethbridge Regional Police Commission 2013....	5
Executive Summary.....	5
Organization Chart	6
LRPS Division Highlights.....	7
• Administrative Services	7
• Patrol Operations Division	8
• Criminal Investigation Division	9
• Support Services Division.....	10
Lethbridge Regional Police Service Awards and Recognition.....	11
Recognition of Service	12
Member Hires, Retirements, Resignations and Promotions.....	12
Victim/Witness Services.....	13

2013 STATISTICAL REPORT

Methodology	15
Top Calls for Service by Call Type.....	16
Top Call Types by Month	16
Total Calls for Service by Month	17
Team Strength by Year	17
Violation Tickets per Month by Type	17
Crimes Against Persons.....	18
Crimes Against Property	21
Vice Crimes	24
Drug Offences	24
Other Offences	25
Other Police Responses	26
Professional Standards Unit	27
Criminal Code Driving Offences	28
Provincial Statute Summons Issued	29
Traffic Collisions	30
Collisions by Object	30

MESSAGE FROM CHIEF TOM MCKENZIE

The Lethbridge Regional Police Service is committed to providing safe communities and the dedication and hard work of our sworn-members, non-sworn members and volunteers in 2013 was instrumental in the success of the organization.

Once again our solve rates exceeded the provincial and national averages, we continued to receive strong support from our community, hired a total of 13 officers and forged ahead with a number of initiatives and projects in each division to create efficiencies within the organization and ultimately enhance the level of service we provide our citizens.

Internally, 2013 was a year of change. The Service added a Deputy Chief position which led to the re-alignment of the organization from four divisions to three and the lateral transfer of each Inspector. In addition, we added a Staff Sergeant position, civilianized court detail and laid the groundwork to civilianize other areas including management of the Records Management Unit and Policy and Accreditation Unit to help reduce costs and put police officers back on the street.

In the fall of 2013 changes at the Lethbridge Correctional Centre resulted in most prisoners no longer being held at the jail and a transitional strategy, including the addition of four Commissionaires to help manage the increased demands on our Short Term Holding Facility, was put in place.

In 2013 LRPS was involved in a comprehensive audit of 482 policing standards by the Commission on Accreditation for Law Enforcement Agencies (CALEA) as part of our fifth re-accreditation process.

Partnerships with the Alberta Law Enforcement Response Teams (ALERT) to combat organized crime as well as a number of other community agencies and service providers, including mental health and social housing, were also key in 2013 and continue to be a priority as we move forward.

Technology continues to be both a benefit and a curse. The ability to gather and share information and intelligence is an integral part of policing operations. Advancements in technology have made data mining and sharing easier than it ever has been before but programs, equipment and techniques change quickly and can be very expensive to keep current. As society continues to depend more and more on technology we must ensure we adopt evidence-based practices and solutions that meet the changing needs of our Service and communities.

In line with the City's Capital Improvement Plan, the expansion of the police building continued to advance in 2013. The building contract was awarded to Dawson Wallace Construction and the design of the building to Stantec and Alvin Reinhard Fritz Architect Inc. Plans have been developed and it is projected that we will break ground in 2014.

In closing, I would like to thank each of our members and volunteers for their hard work and productivity in 2013. As we move forward please continue to demonstrate our values of respect, honesty, integrity, excellence and commitment in all that you do.

Chief Tom McKenzie

LETHBRIDGE REGIONAL POLICE SERVICE HISTORY

We have proudly served our community for 111 years.

The Lethbridge Police Force was established in 1902 and Thomas Lewis was appointed Chief Constable. At the time, a total of two officers served an estimated population of 2,000 people.

In 2002 the Lethbridge Police Service celebrated 100 years of policing the City of Lethbridge. Two years later the Lethbridge Police Service became the Lethbridge Regional Police Service following a regionalization agreement to provide policing services to the Town of Coaldale.

FACTS ABOUT THE LETHBRIDGE REGIONAL POLICE SERVICE

Regional Policing Population	97,943
Lethbridge Regional Police Service	
175 sworn members	
53 non-sworn members	
55 volunteers	
Police to Population Ratio	1:560
Dispatched Calls for Service.....	30,323
Total 911 Calls to	
Public Safety Communications Centre.....	41,120
Total Police Actions Taken	48,701

OUR MISSION

Providing Safe Communities

OUR VISION

Citizens living in a safe community provided through: community participation, partnerships and excellence in service delivery.

OUR VALUES

Respect, honesty, integrity, excellence, commitment



LETHBRIDGE REGIONAL POLICE COMMISSION 2013

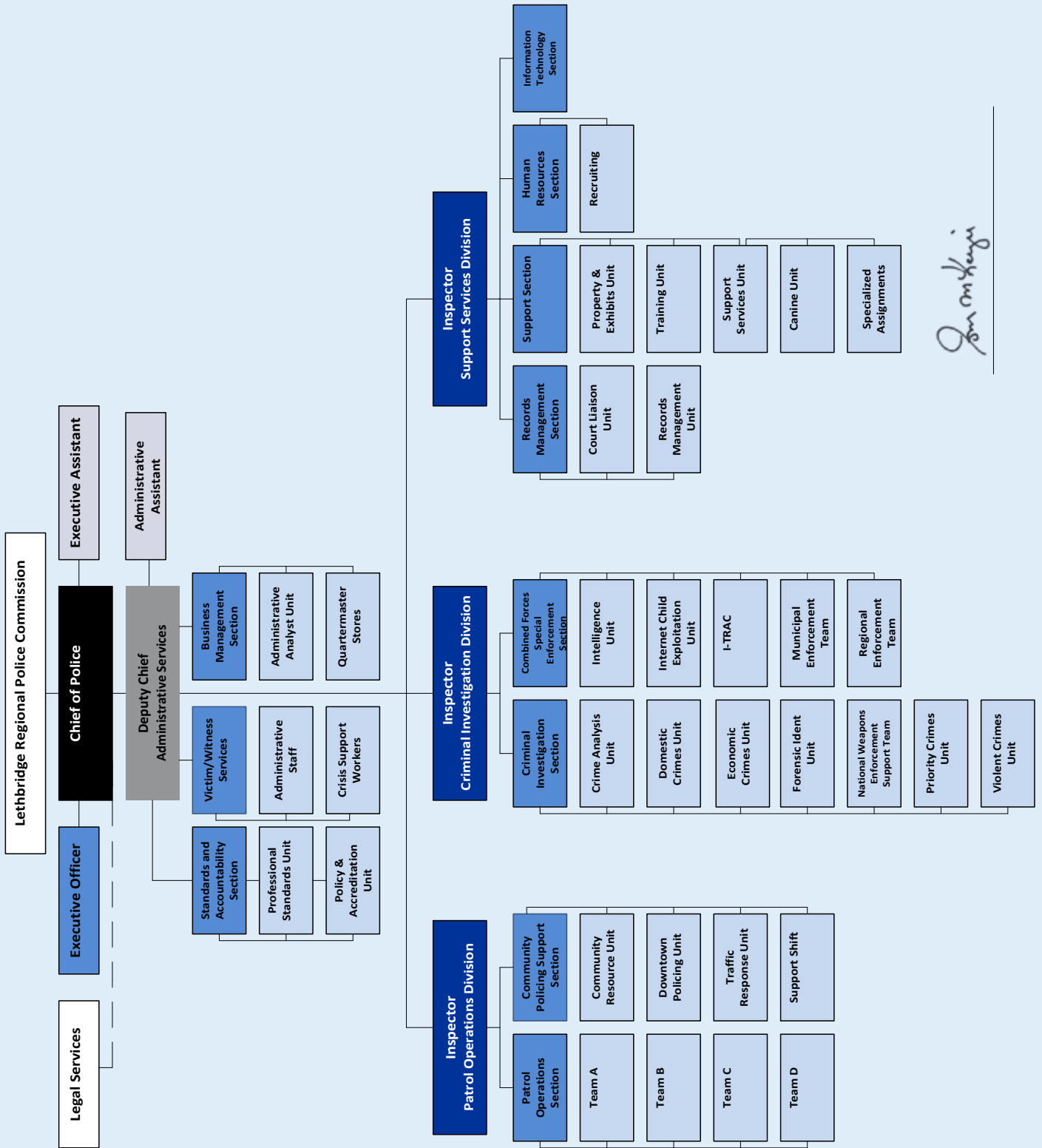
Chair	Doug McLaughlin	Member	Lee Cutforth
Vice-Chair	Alex Hann	Councillor	Sherrie Duda (Coaldale)
Member	Adam Zanoni	Councillor	Liz Iwaskiw
Member	Alexander McKay	Councillor	Tom Wickersham
Member	Marion Wiebe		

EXECUTIVE SUMMARY

The Lethbridge Regional Police Service is committed to providing safe communities through partnerships, community participation and excellence in service delivery. We serve the citizens of Lethbridge and Coaldale with respect, honesty, integrity, excellence and commitment. Guided by the four pillars of policing – public safety, public trust, public confidence and professionalism – we will continue to develop strategies to reduce crime and disorder and ensure citizens feel safe in their neighbourhoods.

Working in partnership with the Lethbridge Regional Police Commission, we identified four strategic areas to focus manpower and resources in an effort to continue to provide safe communities:

- Prevention and Enforcement
- Visibility and Community Engagement
- Healthy Organization
- Continued Effective Fiscal Management



LRPS DIVISION HIGHLIGHTS



DEPUTY CHIEF COLIN CATONIO ADMINISTRATIVE SERVICES

The newly established position of Deputy Chief commenced Aug. 1, 2013. With that came the reorganization of the duties and functions of the various divisions within the Service. In addition to supporting the Chief in his role, the Deputy Chief's office is now responsible for various administrative and professional standards functions, including policy and accreditation, internal investigation of public complaints and overseeing Victim/Witness Services and the Business Management Section.

In 2013 the Service participated in an accreditation process through the Commission for Accreditation of Law Enforcement Agencies (CALEA). In December we completed our sixth re-accreditation which involved a comprehensive audit of our policies in order to demonstrate we comply with 482 standards that are internationally recognized as law enforcement best practices.

During the first quarter of 2013 a second investigator was added to the Professional Standards Unit to enhance investigative capacity for internal investigations that have demonstrated increased complexity to satisfy public expectations of transparency and accountability.

The daily business needs and attention to finances are evident in a growing organization such as ours and frequent financial transactions are required to ensure we remain current in equipment, training and technology. The Business Management Section oversees the day-to-day financial operations of the organization and is keenly aware of the need for fiscal responsibility now and as we move forward into the next budget cycle.

In 2013 our Victim/Witness Services Unit acquired 16 new volunteer Crisis Support Workers. By year's end the team totaled 44 men and women who assisted victims and witnesses of crimes or tragedy alongside police at hundreds of calls for service.



“providing safe communities”

LRPS DIVISION HIGHLIGHTS



INSP. TOM ASCROFT PATROL OPERATIONS DIVISION

A long-standing agreement with the Lethbridge Correctional Centre came to an end in September of 2013, resulting in a need for the Service to focus on prisoner management within the police building. Transitional plans have been put in place and the issue will be evaluated prior to the 2015-2018 budget cycle. In short, prisoners that were once housed and managed at the correctional centre, as a courtesy, now have to be managed by LRPS resources. This has required the addition of four contract staff from the Corps of Commissionaires.

A Data-Driven Approach to Crime and Traffic Safety (DDACTS) model was introduced during 2013 in an effort to determine the impact we can have on crime by dedicating resources based on times and locations. Three high call volume locations were determined, analysis conducted to narrow the day of the week and time of day that incidents were occurring, and resources were deployed accordingly. Through the continued use of DDACTS our hope is that we will have police officers in the right place at the right time to prevent crime, disorder and collisions.

During 2013 the year-long pilot project with the Collision Reporting Centre successfully concluded and a long-term agreement is now in place. The CRC has improved customer service to those involved in the most common types of collisions, and also freed up sworn police officers to deal with priority calls for service and investigations.

During 2013, Patrol Operations members attended over 30,000 calls for service and over 3,000 prisoners were housed in our detention area.



LRPS DIVISION HIGHLIGHTS



INSP. BILL KAYE CRIMINAL INVESTIGATION DIVISION

In 2013 the Criminal Investigation Division – which is responsible for the investigation of serious criminal matters – once again had solve rates that were higher than the provincial and national average. Officers were responsible for successfully concluding more than 86 per cent of violent crime cases as well as conducting successful investigations through our Combined Forces Special Enforcement Section targeting organized crime. Numerous drug traffickers were arrested, had property and proceeds of crime seized and illegal drugs confiscated.

In 2013 we again experienced a slight increase in reported criminal occurrences over 2012 but still remain below the five-year average. The greatest increases were reported in violent crime, which includes all crimes against persons that result in injury or death. Much of the violent crime experienced in our community is associated with the drug trade. In addition, domestic crime continues to be a concern and members of our Domestic Crimes Unit (DCU) specialize in investigations that involve crimes within the family unit and between intimate partners. DCU officers also work closely with Child Protection investigators to ensure the safety of children in these situations.

Property crime is the most prevalent crime type, encompassing 70 per cent of all reported crime in our communities. The Priority Crime and High Risk Offenders Unit provide directed investigations into property crimes and the associated offenders. High Risk Offender (HRO) officers are also responsible for monitoring offenders on pre-trial release, probation and parole. While economic crime has not shown a significant change in volume, the complexity and the scope of the investigations continue to grow and take on a national and international flavour.

The Combined Forces Special Enforcement Section (CFSES) – a joint forces section comprised of LRPS members and RCMP members – conduct investigations throughout Lethbridge and the surrounding region as criminal activity outside the city often has a direct impact on our communities. CFSES members target drug trafficking, child pornography and exploitation, gang activity and other organized crime.

The Forensic Identification Unit provides support services to all other investigative units with respect to evidence collection, processing crime scenes and forensic computer examination. .



“providing safe communities”

LRPS DIVISION HIGHLIGHTS



INSP. JEFF COVE SUPPORT SERVICES DIVISION

During 2013 the Support Services Division was focused on recruiting, retention, opportunities for employee development and providing the right tools for employees to perform their jobs.

As a priority for the Training Unit and Human Resources Section training was provided to sworn and non-sworn employees including mental health awareness, computer training, enhanced leadership training through the Canadian Police College and Athabasca University and an internal supervisor's course. The Service also expanded the use of the training simulator by doing annual qualifications in firearms, pepper spray and Conducted Energy Weapons.

An analysis and review of the sworn officer performance evaluations was conducted which resulted in the development of four separate rank-specific performance evaluations with a greater a focus on day-to-day tasks and leadership competencies. In conjunction with the evaluation project the Service has developed a Peer and Upward Review Survey that will be included as a portion of the 2014 promotional process.

The Recruiting Unit has been active throughout the year with numerous initiatives including the Cops vs. Canes hockey game, Clean-Up the Coulees with a Recruiter, Run with the Recruiter, and other community events. In addition, a mentorship program with the Lethbridge Hurricanes and K9 Cst. James Demone was also established. In total 10 new police recruits were hired and trained at the Centre for Advancement in Community Justice and three experienced officers were hired in late 2013.

In the Records Management Unit, staff members handled more than 48,000 files generated from more than 30,000 calls for service in the last year. The Service has seen positive changes in the past year with the advancement of a Records Management Unit supervisor position and re-alignment and of the Court and Disclosure Unit to focus on enhancing the delivery model. Efficient and timely reporting and disclosure methods are constantly under review and electronic disclosure will be a top priority for the division moving forward.

2013 was a very busy and challenging year for the LRPS IT Section. IT upgraded or implemented 12 application servers/systems, the main data back-up system and installed new computers in 29 police vehicles. Some major network infrastructure was upgraded which included network cabling and hardware for over 700 voice and data ports in the main server room and communications mechanical room and worked in conjunction with Corporate IT on the transition from analog phone technology to VoIP technology for the police station. The LRPS IT Section was very pleased to provide practicum work experience positions for two Lethbridge College Computer Information Technology students, one of which was hired into a term position to assist with some projects and technical support work. The IT Section also provides technology support for the Lethbridge PSCC (Public Safety Communications Center) and is also participating in a major role for some of the Lethbridge Fire/EMS projects.

The Support Services Unit and specialized assignments including Tactical Team, K9, Incident Commanders, Crisis Negotiators, Explosive Disposal Unit all participated in required training to ensure they are fully prepared to support the frontline police officers as high risk incident arise.



LETHBRIDGE REGIONAL POLICE SERVICE AWARDS AND RECOGNITION

CITIZEN AWARDS

CHIEF OF POLICE LETTER OF RECOGNITION

- A citizen was commended for their honesty and integrity for turning in a sum a money found on the street.
- Two citizens were commended for providing assistance to man in distress in Henderson Lake.

POLICE SERVICE AWARDS

DIVISIONAL RECOGNITION

- Cst. Dwayne Harrison, Cst. Curtis Johnson and Cst. Randy Ward were recognized for their actions in dealing with a suicidal male on the High Level Bridge.
- Cst. Ryan Kiddine and Police Service Dog Figo were recognized for winning second place in both tracking and building searching during the Canine Association Trials held in Saanich, BC in September 2013.
- Cst. James DeMone and Police Service Dog Arco were recognized for winning third place in obedience and fifth place in both evidence searching and drug searching during the Canine Association Trials held in Saanich, BC in September 2013.
- Sgt. George Carscadden was recognized for the assistance and support he provided to fellow members following a serious incident.

INSPECTOR'S COMPLIMENT

- Cst. Mark Sander and Cst. Derek Riddell were commended for their work ethic, professionalism and going above and beyond in assisting the Calgary Police Service with an investigation.

RECOGNITION OF SERVICE

25-YEAR ALBERTA LAW ENFORCEMENT LONG SERVICE MEDAL

Craig Deimuth Michael Reeder
Ken Hogan David Slomp
Wes Houston Randy Ward

15-YEAR LETHBRIDGE REGIONAL POLICE SERVICE MEDAL

Rob Bittman
Rusty Lawrence
Jason Moulton
Mark Smallbones

TOP RECRUIT AWARD

Aaron Burke

MEMBER HIRES

SWORN

Nicole Affie Brett Cullen
Amanda Balaz Spencer Hodgson
Aaron Burke Joel Running
Kathleen Conroy David Warner
Nicholas Counsineau Peter Wigand

NON-SWORN

Jennifer Dobson Sara Lo
Kendra Dunlop Cheryl Milton
Angela Harris Jennifer Pagliericci
Sandra Hyggen Kyla Slater

RETIREMENTS

SWORN

Michael Ballman Ric Wallace
Craig Deimuth Randy Ward
David Maze Doug Wilson
Nolan Meyer
Paul Stahl

NON-SWORN

Shirley Teshima
Daryl Trotter

RESIGNATIONS

Kelsie Bonish
Angelene Bull
Kathleen Conroy
Jennifer McNeilly
Trevor Sparrow

PROMOTIONS

Leon Borbandy
Travis Evenson
Rod Klassen
Rusty Lawrence
Trevor Sheppard



VICTIM/WITNESS SERVICES

Back Left to right

Gloria Holberton, Inspector Bill Kaye, Austin Slezina, Bonnie Barrows, Chief Tom McKenzie, Rhonda Dawes, Megan Williamson, Rod Schultz, Kathy Bandmann

Second row from the back left to right

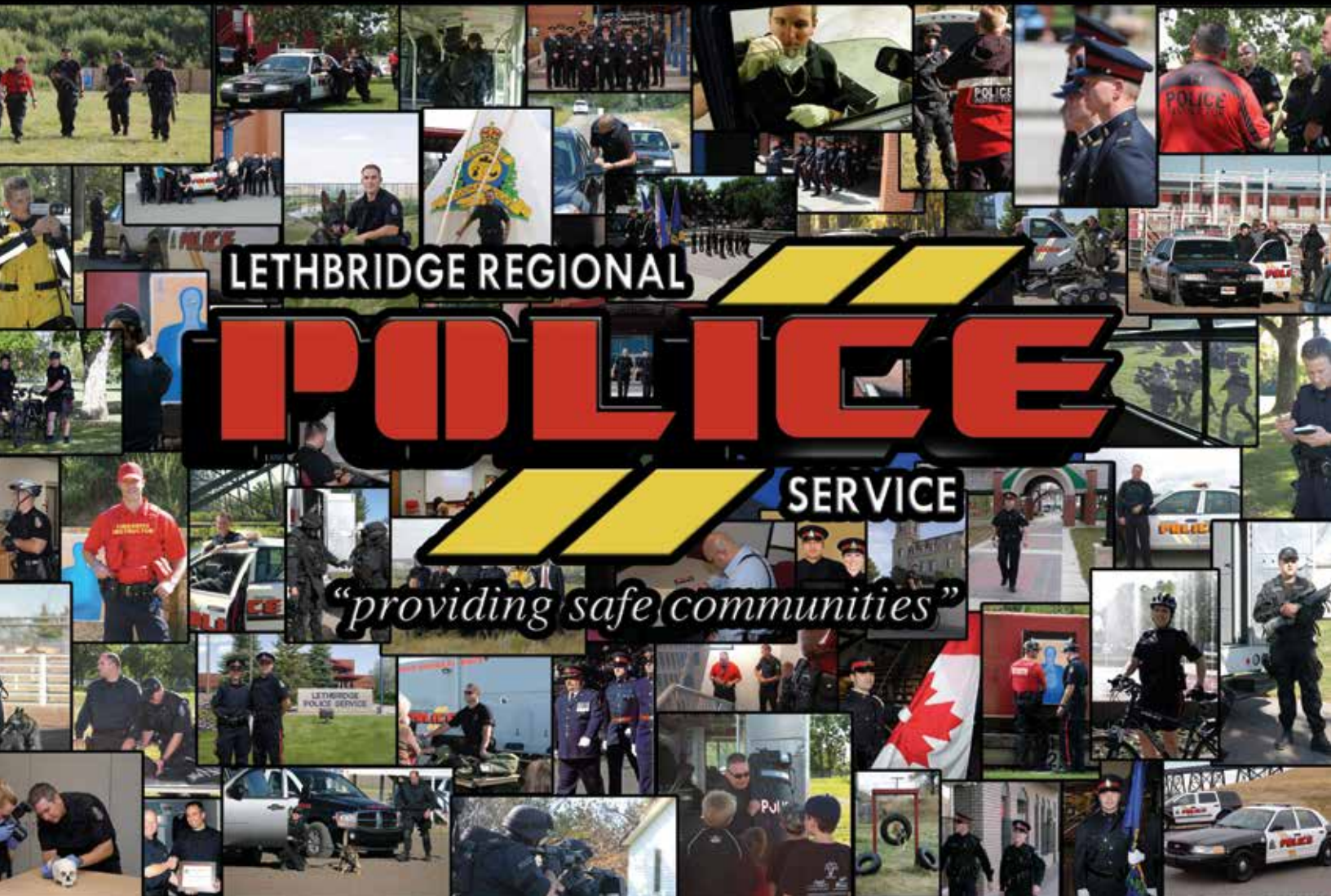
Jillian Borysewicz, Gwena Schultchen, Joan Ross, Dianne Simons, Carel Simpson, Natalia Cabane, Julienne Dyck, Dan McGee, Allison Gillet, Kayla Shore, Ruth Gronemeyer, Stephanie Gohran, Marianne Sheets, Tim Rau, Lacey Anwender

Middle row left to right

Cass Loff, Stacy Hill, Jean Harrowing, Sarah Smith, Karen Blue, Lue Weins, Kem Brewer, Grace Couturier, Joyce Klassen, Josh Maret, Rosalind Shakotko, Terri Rollingson, Eric Wong

Front Row, Left to right

Brady Durbano, Gillian Reid, Lori Gerber, Vicky Wilson, Darcie James (Program Manager), Karen Thomas, Chand Mwansa, Penny Balfour, Brandi Emes, Sarah Jorgensen



LETHBRIDGE REGIONAL

POLICE

SERVICE

“providing safe communities”

2013 STATISTICAL REPORT

STATISTICAL REPORT - METHODOLOGY

Unless otherwise indicated, this statistical information is derived from computerized data obtained from the Lethbridge Regional Police Service report in NICHE, entitled Occurrence Stats –All Violations. An incident may be comprised of one or more offences or violations of the law, or non- offence occurrences and therefore all of these are included in our totals. The data was extracted on March 12, 2014 and is subject to variation from previously published statistical reports due to the nature of offences being reported and cleared. Data is calculated on a calendar year basis consisting of data from January 1 through December 31. This data is further confirmed through review by the investigational units.

OFFENCES are counted based on the reported date. CLEARANCES are counted in the month the offence is either CLEARED BY CHARGE or CLEARED OTHERWISE. An offence is CLEARED BY CHARGE when at least one offender has been identified and charged in connection with that offence. An offence is CLEARED OTHERWISE when at least one offender has been identified and there is sufficient evidence to lay a charge but no charge is laid for one of the following reasons:

- a) the offender dies or is committed to a Mental Institution,
- b) the complainant or an essential witness dies,
- c) the offender is less than 12 years old,
- d) the offender has diplomatic immunity or there is government policy preventing prosecution,
- e) the offender is not in Canada and cannot be returned,
- f) the offender has been charged or is serving a sentence for another incident and it is decided not to proceed with a charge for this particular offence,
- g) the complainant does not wish prosecution against the offender,
- h) the police decide to warn the offender or recommend the offender for the Alternative Measures Program instead of laying a charge.

An offence is UNFOUNDED when the investigation has determined that the complaint is without merit.

The CLEARANCE RATE is calculated by dividing the actual offences by the total offences cleared (offences cleared by charge plus offences cleared by other). Clearances also include offences reported in previous years and cleared in the current year; therefore for some offence types the clearance rate may exceed 100%.

The PERCENT CHANGE for incidents reported is calculated by subtracting the number of incidents for the preceding year from the number of incidents for the current year, dividing by the number of incidents for the preceding year then converting to a percent by multiplying by 100.

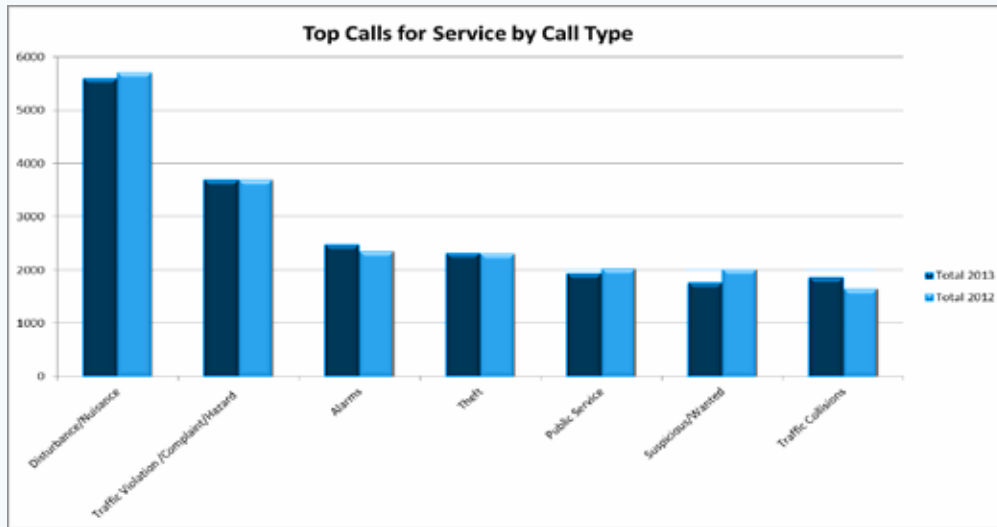
For example, if there were 563 assaults in 2012 and 516 assaults in 2013, then the percent change is calculated as follows: $(516-563)/563 \times 100 = -8.3\%$. When the percent change is displayed as “-”, it simply means statistically the mathematical equation cannot be carried out as it is trying to divide by 0.

TRAFFIC OFFENCES are counted based on the reported date. Generally, a traffic offence relates to a charge laid for a specific violation. Abandoned vehicles and Hit and Run collisions are exceptions. They are reported and cleared in the same manner as non- traffic offences.

COLLISION DATA has been extracted from the CROMS Analytics Portal, based on data maintained by the Collision Reporting Centre.

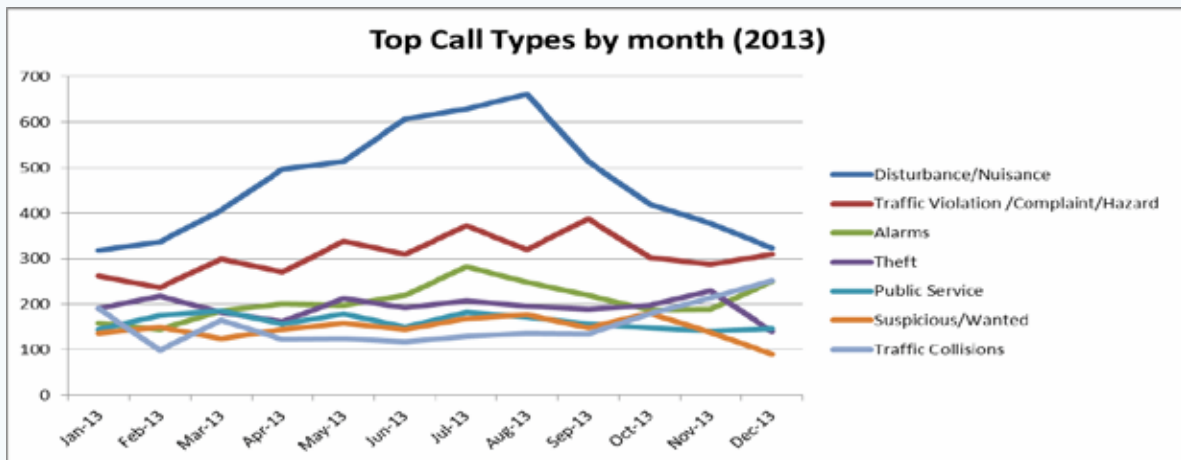
OTHER POLICE RESPONSES (Alarms & Missing Persons) data has been based on the Niche extraction by Occurrence Type in order to account for a procedural change in classifying which would have resulted in a significant under-reporting of said occurrences.

TOP CALLS FOR SERVICE



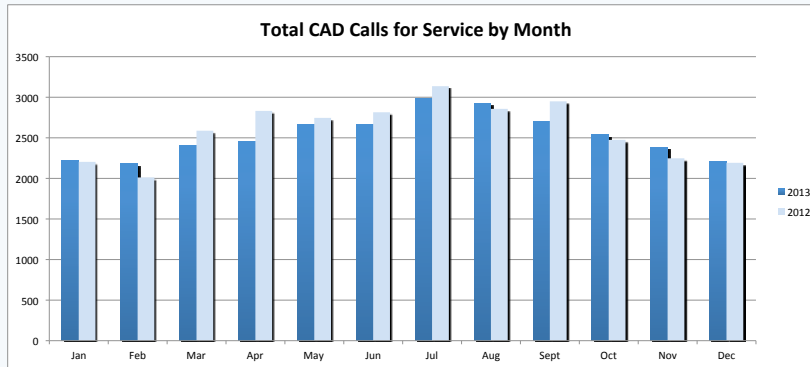
The top five calls for service Event Types are reported on a monthly basis. Due to slight variation from month-to-month, a total of seven Call Types were included in the top 5 monthly calls throughout 2013; all are included for comparison in the graph above.

Call Type	Total 2013	Total 2012
<i>Disturbance/Nuisance</i>	5602	5713
<i>Traffic Violation /Complaint/Hazard</i>	3696	3695
<i>Alarms</i>	2483	2354
<i>Theft</i>	2316	2311
<i>Public Service</i>	1937	2025



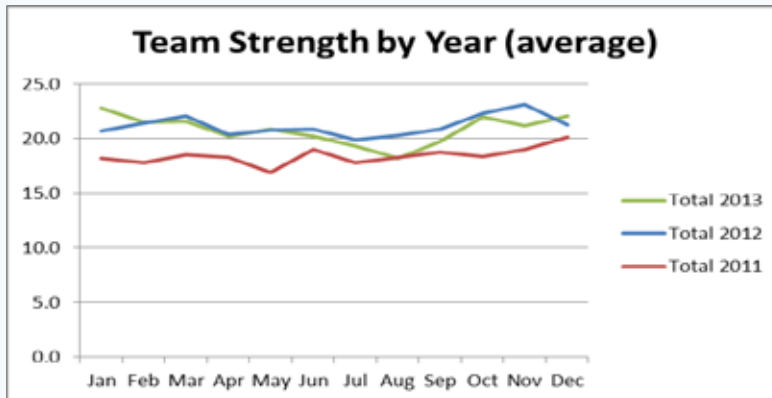
Calls for Service by Month

Total Calls	Jan	Feb	Mar	Apr	May	Jun	Jul	Aug	Sept	Oct	Nov	Dec	TOTAL
2013	2219	2178	2409	2453	2660	2661	2988	2925	2706	2537	2384	2203	30,323
2012	2203	2012	2588	2831	2745	2814	3136	2856	2950	2474	2247	2192	31,048



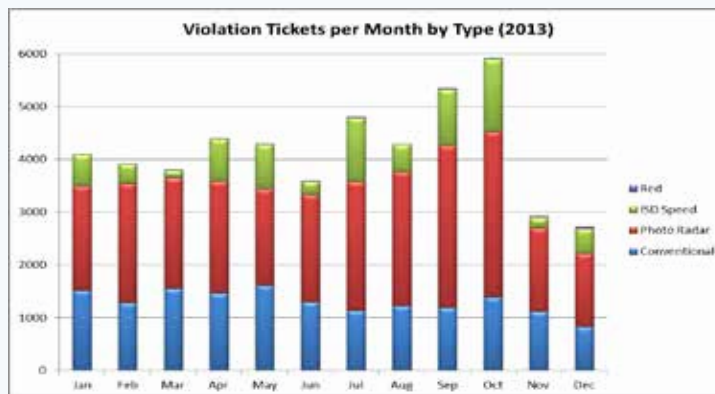
Average No. of Personnel per Shift

Unit	Jan	Feb	Mar	Apr	May	Jun	Jul	Aug	Sep	Oct	Nov	Dec
Patrols	13.8	12.9	12.8	12.5	12.5	12.3	12.9	12.2	12.4	13.8	13.4	13.3
DBU	2.5	2.3	2.4	2.1	2	2.5	2.1	1.7	1.9	1.9	1.3	2.5
K-9	2.0	2.0	1.9	1.8	1.9	1.7	1.5	1.5	1.7	1.8	1.7	2
Traffic	4.5	4.3	4.5	3.8	4.2	3.4	2.8	2.8	3.7	4.5	4.8	4.3
Support					0.3	0.3	0.0	0.0	0.0	0.0	0.0	0.0
Total 2013	22.8	21.5	21.6	20.2	20.9	20.2	19.3	18.2	19.7	22.0	21.2	22.1
Total 2012	20.7	21.4	22.1	20.4	20.8	20.9	19.9	20.3	20.9	22.3	23.1	21.3



Violation Tickets per Month

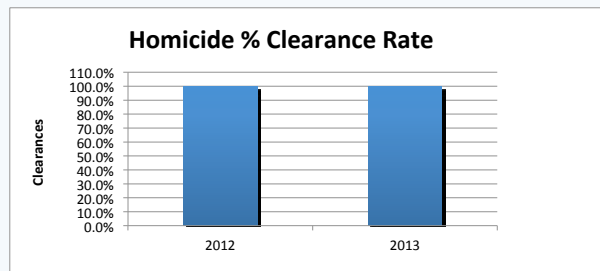
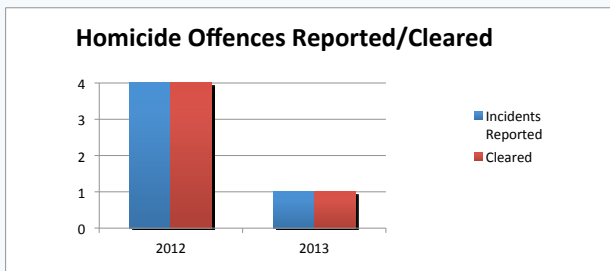
Tickets	Jan	Feb	Mar	Apr	May	Jun	Jul	Aug	Sep	Oct	Nov	Dec	2013 Total	2012 Total
Conventional	1519	1283	1549	1462	1611	1291	1136	1219	1188	1390	1110	825	15,583	19,058
Photo Radar	1975	2261	2102	2118	1829	2035	2442	2547	3076	3137	1592	1388	26,502	34,010
ISD Speed	597	369	140	803	843	258	1207	517	1067	1374	196	479	7,850	8,966
Red	9	3	5	13	17	20	28	5	28	22	27	36	213	158
Total	4100	3916	3796	4396	4300	3604	4813	4288	5359	5923	2925	2728	50,148	62,192



SUMMARY REPORT

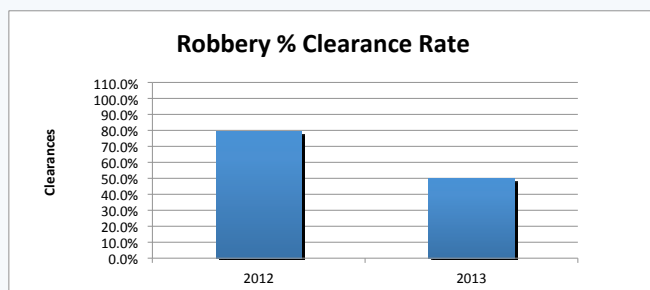
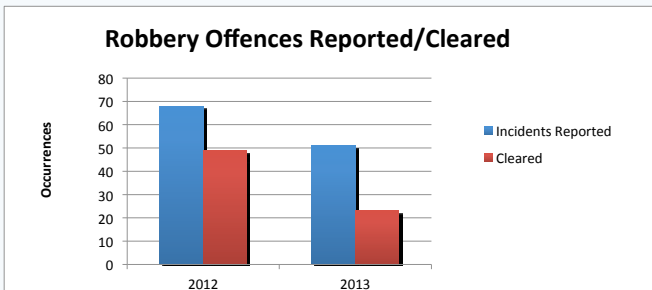
CRIMES AGAINST PERSONS

	INCIDENTS REPORTED				CLEARED BY CHARGE			CLEARED BY OTHER			UNFOUNDED		% CLEARANCE RATE	
	2012	2013	Change	%Change	2012	2013	Change	2012	2013	Change	2012	2013	2012	2013
Homicide														
First Degree Murder	0	0	0	0.0%	0	0	0	0	0	0	0	0	-	-
Second Degree Murder	2	1	-1	-50.0%	2	1	-1	0	0	0	0	0	100.0%	100.0%
Attempted Murder	1	0	-1	-100.0%	1	0	-1	0	0	0	0	0	100.0%	0.0%
Manslaughter	1	0	-1	-100.0%	1	0	-1	0	0	0	0	0	100.0%	0.0%
Infanticide	0	0	0	0.0%	0	0	0	0	0	0	0	0	-	-
Criminal Negligence - death	0	0	0	0.0%	0	0	0	0	0	0	0	0	-	-
Total Homicide Offences:	4	1	-3	-75.0%	4	1	-3	0	0	0	0	0	100.0%	100.0%



Homicide offences include all instances where, by criminal code definition, a human life is taken at the hands of another. Homicides includes both culpable and non-culpable homicides; a non-culpable homicide would be reflected in the "cleared by other" category.

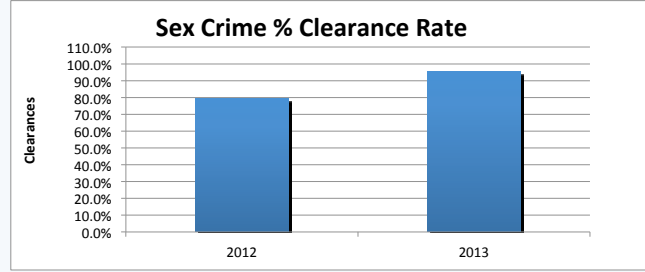
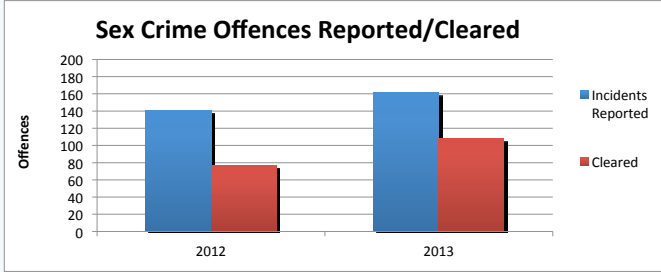
	INCIDENTS REPORTED				CLEARED BY CHARGE			CLEARED BY OTHER			UNFOUNDED		% CLEARANCE RATE	
	2012	2013	Change	%Change	2012	2013	Change	2012	2013	Change	2012	2013	2012	2013
Robbery														
Financial Institution Robbery	1	0	-1	-100.0%	1	0	-1	0	0	0	0	0	100.0%	0.0%
Financial Institution Robbery with Firearm	0	0	0	0.0%	0	0	0	0	0	0	0	0	-	-
Financial Institution Robbery with Offensive Weapon	0	0	0	0.0%	0	0	0	0	0	0	0	0	-	-
Commercial Robbery	8	11	3	37.5%	7	9	2	0	0	0	1	0	100.0%	81.8%
Commercial Robbery with Firearm	4	1	-3	-75.0%	6	1	-5	0	0	0	0	0	150.0%	100.0%
Commercial Robbery with Offensive Weapon	4	3	-1	-25.0%	5	1	-4	0	0	0	0	0	125.0%	33.3%
Other Robbery	37	32	-5	-13.5%	19	12	-7	2	0	-2	4	4	63.6%	42.9%
Other Robbery with Firearm	2	0	-2	-100.0%	2	0	-2	0	0	0	0	0	100.0%	-
Other Robbery with Offensive Weapon	12	4	-8	-66.7%	7	0	-7	0	0	0	1	1	63.6%	0.0%
Total Robbery Offences:	68	51	-17	-25.0%	47	23	-24	2	0	-2	6	5	79.0%	50.0%
Robbery - Weapons Displayed														
Firearms	6	1	-5	-83.3%										
Other Weapons	16	7	-9	-56.3%										
Total Weapons Displayed:	22	8	-14	-63.6%										



The number of reported robbery offences decreased in 2013, when compared to 2012. The number of robbery offences with weapons displayed decreased markedly in 2013 when compared to 2012. As shown above, the clearance rate for robbery offences was down in 2013.

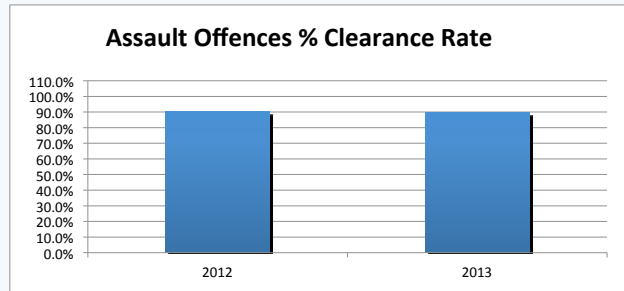
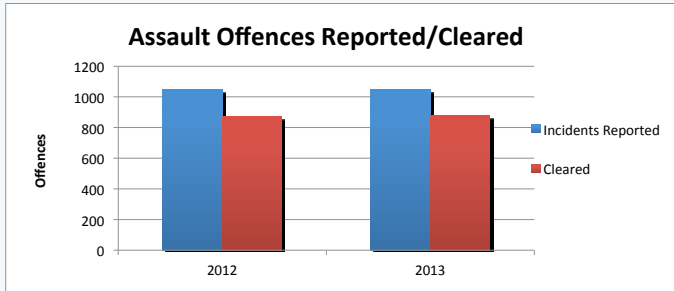
CRIMES AGAINST PERSONS

Sexual Assault	95	117	22	23.2%	42	62	20	7	7	0	38	44	86.0%	94.5%
Sexual Assault - Weapon	2	0	-2	-100.0%	1	0	-1	0	0	0	1	0	100.0%	-
Sexual Exploitation	8	1	-7	-87.5%	6	1	-5	0	0	0	1	1	85.7%	-
Sexual Exploitation of person with disability	0	0	0	0.0%	0	0	0	0	0	0	0	0	-	-
Sexual Interference	21	26	5	23.8%	15	25	10	0	0	0	3	2	83.3%	104.2%
Indecent Acts	15	17	2	13.3%	1	8	7	5	5	0	1	1	42.9%	81.3%
Total Sex Related Offences:	141	161	20	14.2%	65	96	31	12	12	0	44	48	79.4%	95.6%



The number of reported sex related offences have increased in 2013, as have the clearance rates.

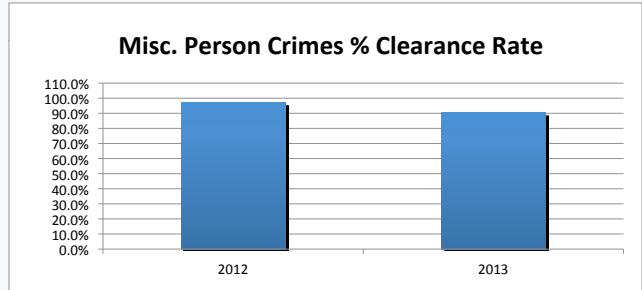
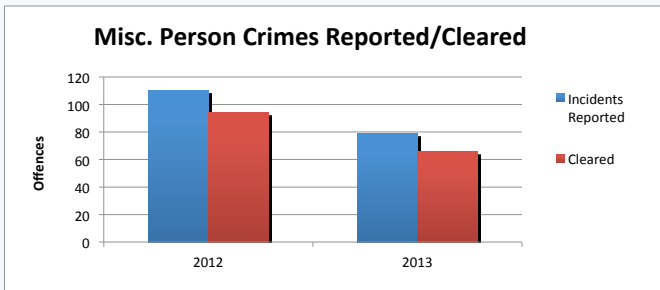
	INCIDENTS REPORTED				CLEARED BY CHARGE			CLEARED BY OTHER			UNFOUNDED		% CLEARANCE RATE	
	2012	2013	Change	%Change	2012	2013	Change	2012	2013	Change	2012	2013	2012	2013
Assault	766	781	15	2.0%	552	559	7	72	85	13	73	55	90.0%	88.7%
Assault	210	199	-11	-5.2%	163	160	-3	9	9	0	8	9	85.1%	88.9%
Assault - Bh/Weapon	23	16	-7	-30.4%	26	15	-11	0	0	0	0	0	113.0%	93.8%
Assault - Aggravated	22	26	4	18.2%	22	26	4	0	0	0	0	0	100.0%	100.0%
Assault - Police Officer	2	3	1	50.0%	2	3	1	0	0	0	0	0	100.0%	100.0%
Assault - BH/Weapon - Peace Officer	22	18	-4	-18.2%	19	15	-4	0	1	1	3	2	100.0%	100.0%
Assault - Other	4	3	-1	-25.0%	3	2	-1	1	1	0	0	0	100.0%	100.0%
Assault - Other Officer	1049	1046	-3	-0.3%	787	780	-7	82	96	14	84	66	90.1%	89.4%
Total Assault Offences:														



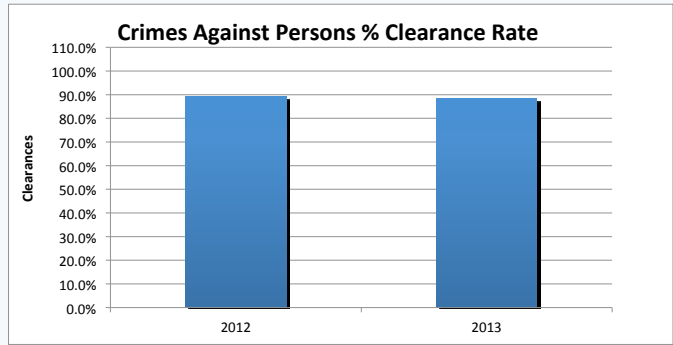
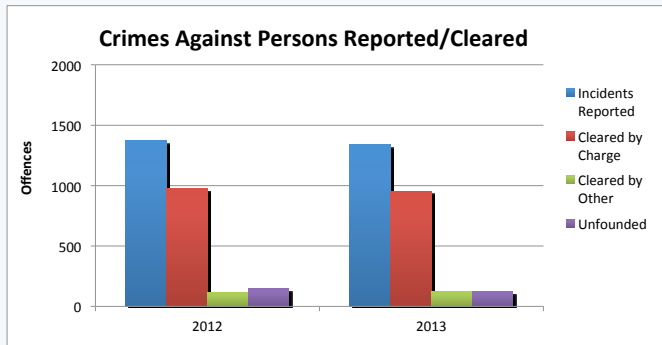
Although the number of reported assaults increased slightly in 2013, there was a reported overall decrease in total assault offences.

CRIMES AGAINST PERSONS

	INCIDENTS REPORTED				CLEARED BY CHARGE			CLEARED BY OTHER			UNFOUNDED		% CLEARANCE RATE	
	2012	2013	Change	%Change	2012	2013	Change	2012	2013	Change	2012	2013	2012	2013
Misc. Person Crimes														
Abduction - Custody Order	0	0	0	0.0%	0	0	0	0	0	0	0	0	-	-
Abduction - No Custody Order	1	0	-1	-100.0%	0	0	0	0	0	0	1	0	-	-
Abduction - Person Under 14	0	3	3	-	0	0	0	0	3	3	0	0	100.0%	100.0%
Abduction - Person Under 16	0	0	0	0.0%	0	0	0	0	0	0	0	0	-	-
Forcible Confinement	24	20	-4	-16.7%	27	19	-8	0	0	0	0	0	112.5%	95.0%
Kidnapping	2	2	0	0.0%	0	0	0	0	0	0	1	2	0.0%	-
Removal Of Children From Canada	0	0	0	0.0%	0	0	0	0	0	0	0	0	-	-
Extortion	7	3	-4	-57.1%	5	1	-4	1	1	0	1	0	100.0%	66.7%
Extortion By Libel	0	0	0	0.0%	0	0	0	0	0	0	0	0	-	-
Criminal Harassment	50	40	-10	-20.0%	38	29	-9	6	5	-1	5	4	97.8%	94.4%
Harassing Phone Calls	23	9	-14	-60.9%	6	5	-1	11	3	-8	5	0	94.4%	88.9%
Indecent Phone Calls	3	2	-1	-33.3%	0	0	0	0	0	0	0	0	0.0%	0.0%
Total Misc. Person Crimes:	110	79	-31	-28.2%	76	54	-22	18	12	-6	13	6	96.9%	90.4%



The number of reported Misc. Person crimes decreased in 2013; the high clearance rate indicates successful investigation and follow-up in this area.



CRIMES AGAINST PERSONS	INCIDENTS REPORTED			CLEARED BY CHARGE			CLEARED BY OTHER			UNFOUNDED		% CLEARANCE RATE	
	2012	2013	%Change	2012	2013	Change	2012	2013	Change	2012	2013	2012	2013
	1372	1338	-2.5%	979	954	-25	114	120	6	147	125	89.2%	88.5%

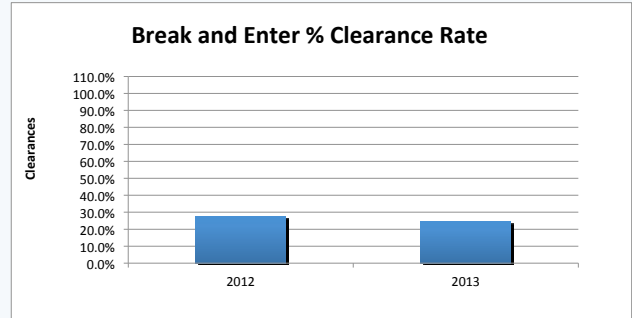
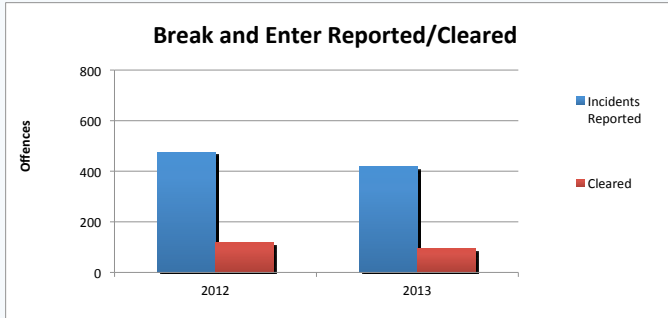
The number of reported incidents of crimes against persons decreased slightly in 2013; clearance rates also decreased slightly (does not include domestic violence or family disputes). The high clearance rate indicates successful investigation and follow-up in regards to crimes against persons.

Domestic Violence	INCIDENTS REPORTED				CHARGES RESULTING			
	2012	2013	Change	%Change	2012	2013	Change	%Change
Domestic Violence	1027	1134	107	10.4%	548	618	70	12.8%
Emergency Protection Order	12	8	-4	-33.3%	3	1	-2	-66.7%

The number of Domestic Violence incidents reported increased by over 10% in 2013 when compared to 2012. Clearance rates are not shown as there is no actual charge for the domestic violence category (i.e. the charge would be "assault" and not "domestic violence").

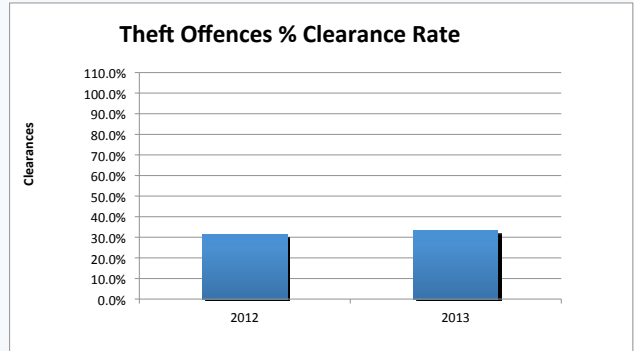
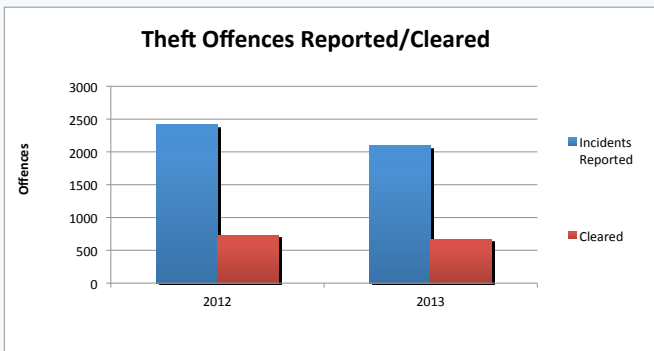
CRIMES AGAINST PROPERTY

	INCIDENTS REPORTED				CLEARED BY CHARGE			CLEARED BY OTHER			UNFOUNDED		% CLEARANCE RATE	
	2012	2013	Change	%Change	2012	2013	Change	2012	2013	Change	2012	2013	2012	2013
Break and Enter														
Break & Enter Attempted - Residence CC	37	27	-10	-27.0%	3	1	-2	2	1	-1	16	8	23.8%	10.5%
Break & Enter Attempted - Shop or Commercial CC	12	10	-2	-16.7%	2	3	1	0	0	0	0	1	16.7%	33.3%
Break & Enter Attempted - Other Premise CC	6	5	-1	-16.7%	0	0	0	1	0	-1	1	0	20.0%	0.0%
Break & Enter Commit - Residence CC	199	171	-28	-14.1%	47	34	-13	9	4	-5	25	25	32.2%	26.0%
Break & Enter Commit - Shop or Commercial CC	104	101	-3	-2.9%	32	25	-7	0	6	6	1	2	31.1%	31.3%
Break & Enter Commit - Other Premise CC	102	92	-10	-9.8%	13	11	-2	3	0	-3	3	1	16.2%	12.1%
Break Out - Other Premise CC	1	0	-1	-100.0%	0	0	0	0	0	0	0	0	0.0%	-
Break Out - Residence	1	1	0	0.0%	0	0	0	0	0	0	0	1	0.0%	-
Break Out - Shop or Commercial	3	0	-3	-100.0%	0	0	0	0	0	0	0	0	0.0%	-
Unlawfully in Dwelling	11	11	0	0.0%	4	8	4	3	1	-2	1	0	70.0%	81.8%
Total B & E Offences:	476	418	-58	-12.2%	101	82	-19	18	12	-6	47	38	27.7%	24.7%



The number of reported incidents of Break and Enters have decreased in 2013, when compared to 2012.

	INCIDENTS REPORTED				CLEARED BY CHARGE			CLEARED BY OTHER			UNFOUNDED		% CLEARANCE RATE	
	2012	2013	Change	%Change	2012	2013	Change	2012	2013	Change	2012	2013	2012	2013
Theft Offences														
Theft Over	23	15	-8	-34.8%	7	4	-3	0	0	0	2	1	33.3%	28.6%
Theft Under	855	747	-108	-12.6%	147	107	-40	86	73	-13	62	60	29.4%	26.2%
Theft from Auto Over	9	7	-2	-22.2%	1	0	-1	0	0	0	0	0	11.1%	0.0%
Theft from Auto Under	970	759	-211	-21.8%	24	29	5	11	9	-2	9	1	3.6%	5.0%
Shoplifting Over \$5000	3	2	-1	-33.3%	1	1	0	0	0	0	0	0	33.3%	50.0%
Shoplifting Under \$5000	558	566	8	1.4%	318	338	20	136	110	-26	5	8	82.1%	80.3%
Total Theft Offences:	2418	2096	-322	-13.3%	498	479	-19	233	192	-41	78	70	31.2%	33.1%
Possession of Stolen Goods over \$5000	11	13	2	18.2%	11	13	2	0	0	0	0	0	100.0%	100.0%
Possession Stolen Goods under \$5000	131	134	3	2.3%	117	123	6	5	7	2	4	1	96.1%	97.7%
Possession of Stolen Goods obtained by crime over \$5000	5	3	-2	-40.0%	3	7	4	0	0	0	0	0	60.0%	233.3%
Possession of Stolen Goods obtained by crime under \$5000	46	34	-12	-26.1%	42	35	-7	1	2	1	0	0	93.5%	108.8%



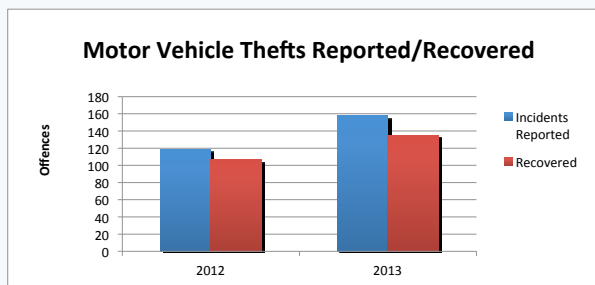
Thefts are divided into categories of general theft, theft from vehicle and theft by shoplifting. Each category is then divided further into offences where the value of the property stolen either exceeded \$5000, or was under \$5000. The total number of thefts does not include the number of auto thefts reported. The number of theft offences decreased in 2013 mainly due to the marked decreased in *Theft from Auto Under*.

CRIMES AGAINST PROPERTY

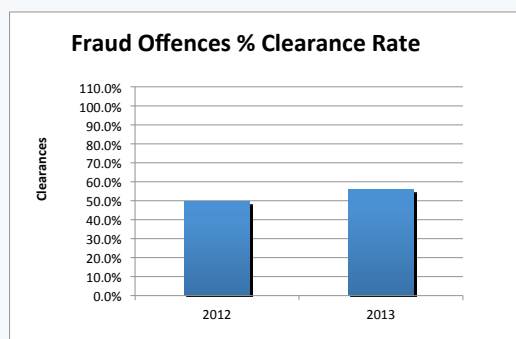
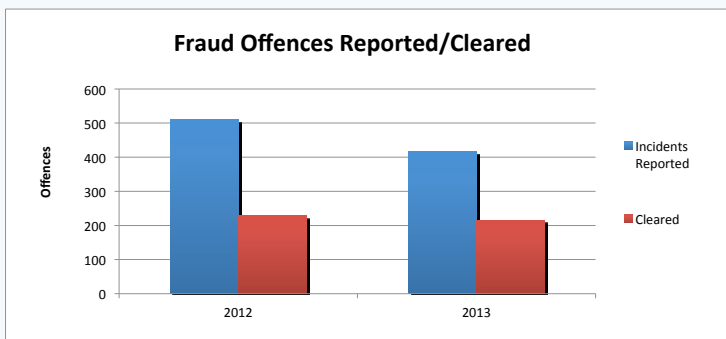
	INCIDENTS REPORTED				CLEARED BY CHARGE			CLEARED BY OTHER			UNFOUNDED		% CLEARANCE RATE	
	2012	2013	Change	%Change	2012	2013	Change	2012	2013	Change	2012	2013	2012	2013
Motor Vehicle Thefts														
Attempt Theft of Automobile	8	5	-3	-37.5%	0	0	0	0	0	0	1	0	0.0%	0.0%
Attempt Theft of Motorcycle	0	1	1	-	0	0	0	0	1	1	0	0	-	100.0%
Attempt Theft of Truck	15	10	-5	-33.3%	1	2	1	0	0	0	0	0	6.7%	20.0%
Theft of Automobile	61	66	5	8.2%	6	15	9	4	2	-2	7	8	18.5%	29.3%
Theft of Motorcycle	6	8	2	33.3%	1	0	-1	1	0	-1	0	0	33.3%	0.0%
Theft of Other M/V	3	11	8	266.7%	0	0	0	0	1	1	0	0	0.0%	9.1%
Theft of Truck	53	61	8	15.1%	8	13	5	1	2	1	7	5	19.6%	26.8%
Subtotal	146	162	16	11.0%	16	30	14	6	6	0	15	13	16.8%	24.2%
Take Vehicle without Consent / Auto	5	21	16	320.0%	3	9	6	1	6	5	1	1	100.0%	75.0%
Take Vehicle Without Consent / Motorcycle	0	0	0	0.0%	0	0	0	0	0	0	0	0	-	-
Take Vehicle Without Consent / Other MV	0	0	0	0.0%	0	0	0	0	0	0	0	0	-	-
Take Vehicle Without Consent / Truck	5	9	4	80.0%	2	1	-1	1	6	5	1	0	75.0%	77.8%
Subtotal	10	30	20	200.0%	5	10	5	2	12	10	2	1	87.5%	75.9%
Total Vehicle Related Thefts:	156	192	36	23.1%	21	40	19	8	18	10	17	14	20.9%	32.6%

2012 2013
 Stolen Motor Vehicles Rec 107 135 (23 vehicles remain outstanding for 2013)
 Percent of Stolen MV Rec 89.9% 85.4%

Motor vehicle thefts in Lethbridge are not generally part of any organized crime operations. As the majority of stolen vehicles are recovered in Lethbridge, it would appear that the majority of these vehicles are used merely for transportation.



	INCIDENTS REPORTED				CLEARED BY CHARGE			CLEARED BY OTHER			UNFOUNDED		% CLEARANCE RATE	
	2012	2013	Change	%Change	2012	2013	Change	2012	2013	Change	2012	2013	2012	2013
Fraud Offences														
Fraud - Cheque Over	6	10	4	66.7%	6	8	2	1	0	-1	1	0	140.0%	80.0%
Fraud - Cheque Under	42	66	24	57.1%	21	34	13	3	2	-1	2	4	60.0%	58.1%
Fraud - Computer	6	4	-2	-33.3%	0	0	0	0	0	0	1	0	0.0%	0.0%
Fraud - Credit Card Over	6	6	0	0.0%	0	0	0	0	0	0	0	0	0.0%	0.0%
Fraud - Credit Card Under	81	57	-24	-29.6%	15	23	8	2	2	0	8	1	23.3%	44.6%
Fraud - Insurance Claims	1	5	4	400.0%	0	3	3	0	0	0	0	3	0.0%	150.0%
Fraud - Identity Fraud	39	21	-18	-46.2%	12	4	-8	0	1	1	3	2	33.3%	26.3%
Fraud - Identity Theft	20	5	-15	-75.0%	9	1	-8	1	0	-1	2	1	55.6%	25.0%
Fraud - Other Over	18	17	-1	-5.6%	11	1	-10	0	1	1	1	2	64.7%	13.3%
Fraud - Other Under	160	135	-25	-15.6%	58	72	14	28	24	-4	12	6	58.1%	74.4%
Fraud - Securities / Financial	14	25	11	78.6%	1	0	-1	0	2	2	1	1	7.7%	8.3%
Fraud - Telemarketing	0	2	2	-	0	0	0	0	0	0	0	1	-	0.0%
Fraud Claims - Government	1	0	-1	-100.0%	0	1	1	0	0	0	0	0	0.0%	-
Fraudulent Contracts/Trades	0	0	0	0.0%	0	0	0	0	0	0	0	0	-	-
Fraudulent Schemes	54	34	-20	-37.0%	0	0	0	51	30	-21	0	1	94.4%	90.9%
Counterfeiting	62	29	-33	-53.2%	4	6	2	5	0	-5	17	9	20.0%	30.0%
Total Fraud Offences:	510	416	-94	-18.4%	137	153	16	91	62	-29	48	31	49.4%	55.8%

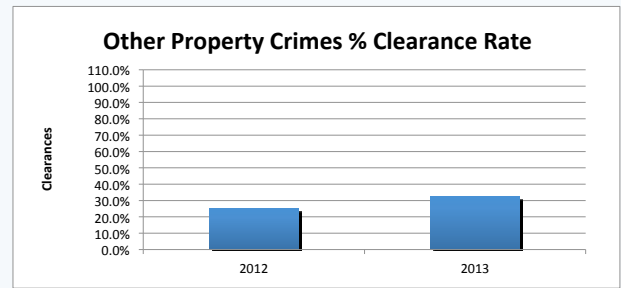
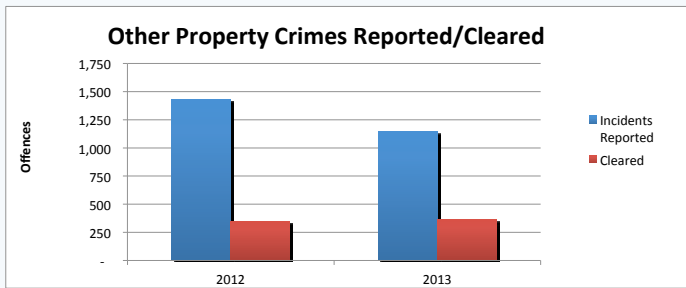


There was decrease in the total number of fraud offences reported in 2013 when compared to 2012.

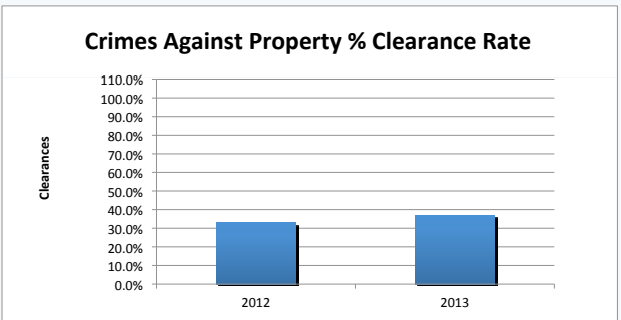
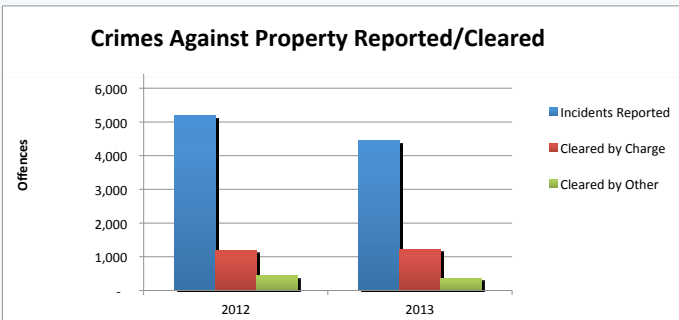
CRIMES AGAINST PROPERTY

	INCIDENTS REPORTED				CLEARED BY CHARGE			CLEARED BY OTHER			UNFOUNDED		% CLEARANCE RATE	
	2012	2013	Change	%Change	2012	2013	Change	2012	2013	Change	2012	2013	2012	2013
Other Property Crimes	715	530	-185	-25.9%	215	211	-4	59	51	-8	19	3	39.4%	49.7%
Mischief	N/A	58	-	-	N/A	1	-	N/A	5	-	N/A	0	N/A	10.3%
Mischief - Graffiti	683	519	-164	-24.0%	40	46	6	23	19	-4	6	4	9.3%	12.6%
Mischief to MV	1	1	0	0.0%	0	0	0	0	0	0	0	0	0.0%	0.0%
Mischief to Religious Property -hate motivated	27	11	-16	-59.3%	6	4	-2	3	2	-1	4	0	39.1%	54.5%
Arson	3	28	25	833.3%	3	28	25	0	0	0	0	0	100.0%	100.0%
Arson Disregard Human Life	4	3	-1	-25.0%	1	1	0	0	0	0	0	0	25.0%	33.3%
Arson Motor Vehicles														
Total Other Property Crimes:	1,433	1,150	-283	-19.7%	265	291	26	85	77	-8	29	7	24.9%	32.2%

Other Property Crimes Reported/Cleared



Fewer other property crimes were reported in 2013 than in 2012. Of interest, the clearance rate for other property crimes increased in 2013.

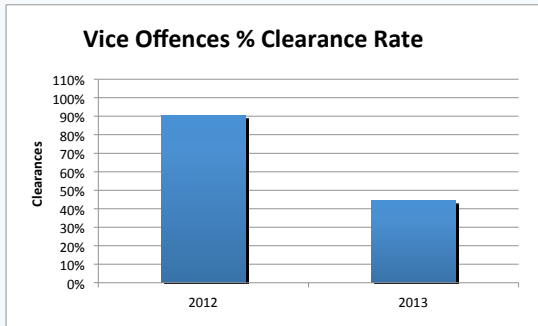
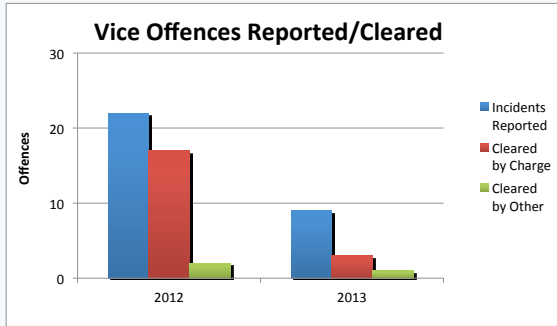


CRIMES AGAINST PROPERTY	INCIDENTS REPORTED			CLEARED BY CHARGE			CLEARED BY OTHER			UNFOUNDED		% CLEARANCE RATE	
	2012	2013	%Change	2012	2013	Change	2012	2013	Change	2012	2013	2012	2013
	5,186	4,456	-14.1%	1,195	1,223	28	441	370	-71	223	161	33.0%	37.1%

Overall, property crime is down in 2013, when compared to 2012. Reported clearance rates for crimes against property have increased in 2013.

VICE CRIMES

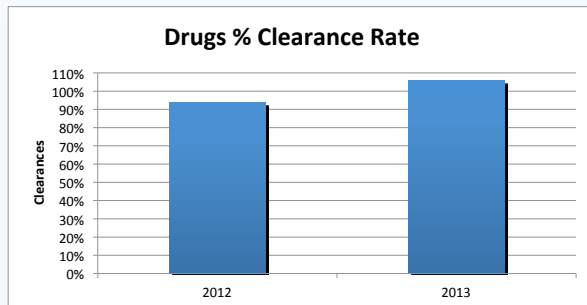
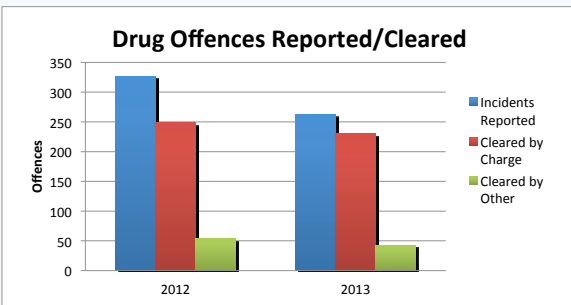
	INCIDENTS REPORTED				CLEARED BY CHARGE			CLEARED BY OTHER			UNFOUNDED		RATE	
	2012	2013	Change	%Change	2012	2013	Change	2012	2013	Change	2012	2013	2012	2013
Bawdy Houses	0	0	0	0.0%	0	0	0	0	0	0	0	0	-	-
Betting House	0	0	0	0.0%	0	0	0	0	0	0	0	0	-	-
Procuring	0	1	1	-	0	1	1	0	0	0	0	0	-	100.0%
Production/Distrib Child Porn	9	7	-2	-22.2%	6	2	-4	0	1	1	1	0	75.0%	42.9%
Prost Under 18 Living Avails	0	0	0	0.0%	0	0	0	0	0	0	0	0	-	-
Prost Under 18 Procuring	0	0	0	0.0%	0	0	0	0	0	0	0	0	-	-
Prot. Child Inv In Prostit Act	0	0	0	0.0%	0	0	0	0	0	0	0	0	-	-
Soliciting - Female	13	1	-12	-92.3%	11	0	-11	2	0	-2	0	0	100.0%	0.0%
Soliciting - Male	0	0	0	0.0%	0	0	0	0	0	0	0	0	-	-
Gaming House	0	0	0	0.0%	0	0	0	0	0	0	0	0	-	-
Other Gaming & Betting	0	0	0	0.0%	0	0	0	0	0	0	0	0	-	-
Conspiracy	0	0	0	0.0%	0	0	0	0	0	0	0	0	-	-
Total Vice Offences:	22	9	-13	-59.1%	17	3	-14	2	1	-1	1	0	90.5%	44.4%



Of note, clearance rates will be impacted by SUI files. Successful clearance of ongoing files may be reflected in the reporting of the following year.

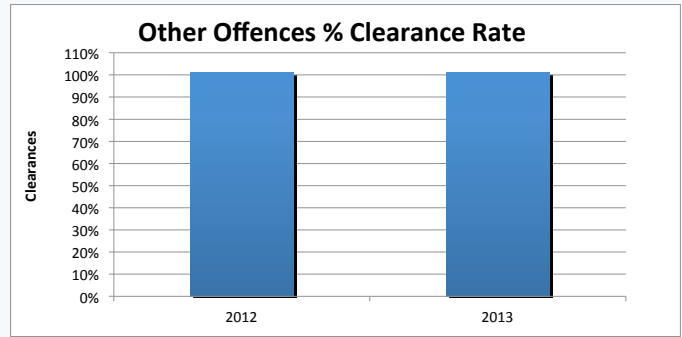
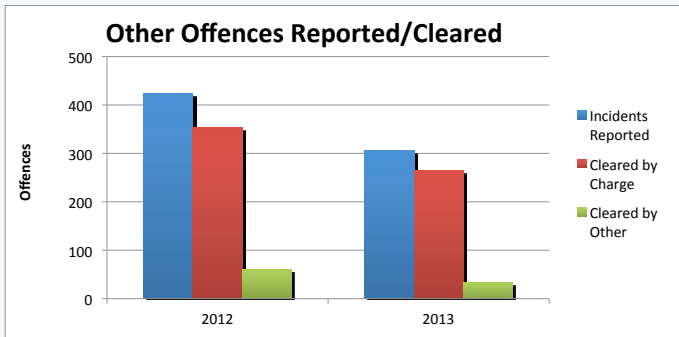
DRUG OFFENCES

	INCIDENTS REPORTED				CLEARED BY CHARGE			CLEARED BY OTHER			UNFOUNDED		RATE	
	2012	2013	Change	%Change	2012	2013	Change	2012	2013	Change	2012	2013	2012	2013
C.D.S. Act Other	0	0	0	0.0%	0	0	0	0	0	0	0	0	-	-
Cannabis/Marijuana - Cultivate	3	0	-3	-100.0%	2	0	-2	1	0	-1	0	0	100.0%	-
Cannabis/Marijuana - Import-Export	0	0	0	0.0%	0	0	0	0	0	0	0	0	-	-
Cannabis/Marijuana - Possession	151	113	-38	-25.2%	91	72	-19	47	39	-8	1	0	92.0%	98.2%
Cannabis/Marijuana - Production	2	6	4	200.0%	2	3	1	0	0	0	2	0	100.0%	75.0%
Cannabis/Marijuana - Traffic	9	19	10	111.1%	9	19	10	0	0	0	0	0	100.0%	100.0%
Cocaine - Import/Export	0	0	0	0.0%	0	0	0	0	0	0	0	0	-	-
Cocaine - Possession	29	32	3	10.3%	24	30	6	2	1	-1	0	0	89.7%	96.9%
Cocaine - Production	0	0	0	0.0%	0	0	0	0	0	0	0	0	-	-
Cocaine - Traffic	86	60	-26	-30.2%	83	74	-9	1	1	0	1	1	98.8%	127.1%
Ecstasy - Import/Export	0	0	0	0.0%	0	0	0	0	0	0	0	0	-	-
Ecstasy - Possession	2	1	-1	-50.0%	2	1	-1	0	0	0	0	0	100.0%	100.0%
Ecstasy - Production	0	0	0	0.0%	0	0	0	0	0	0	0	0	-	-
Ecstasy - Traffic	2	2	0	0.0%	1	3	2	0	0	0	0	0	50.0%	150.0%
Heroin - Import/Export	0	0	0	0.0%	0	0	0	0	0	0	0	0	-	-
Heroin - Possession	0	1	1	-	0	1	1	0	0	0	0	0	-	100.0%
Heroin - Production	0	0	0	0.0%	0	0	0	0	0	0	0	0	-	-
Heroin - Traffic	9	2	-7	-77.8%	8	3	-5	0	0	0	0	0	88.9%	150.0%
Meth-Import / Export	0	0	0	0.0%	0	0	0	0	0	0	0	0	-	-
Meth-Lab	0	0	0	0.0%	0	0	0	0	0	0	0	0	-	-
Meth-Possession	1	3	2	200.0%	2	3	1	0	0	0	0	0	200.0%	100.0%
Meth-Production	0	0	0	0.0%	0	0	0	0	0	0	0	0	-	-
Meth-Traffic	0	1	1	-	0	1	1	0	0	0	0	0	-	100.0%
Other Drugs - Import/Export	0	0	0	0.0%	0	0	0	0	0	0	0	0	-	-
Other Drugs - Possession	17	19	2	11.8%	13	14	1	3	2	-1	0	2	94.1%	94.1%
Other Drugs - Production	1	0	-1	-100.0%	0	0	0	0	0	0	1	0	-	-
Other Drugs - Traffic	15	4	-11	-73.3%	12	6	-6	0	0	-1	0	0	80.0%	150.0%
Total Drug Offences:	327	263	-64	-19.6%	249	230	-19	54	43	-11	3	5	93.5%	105.8%



OTHER OFFENCES

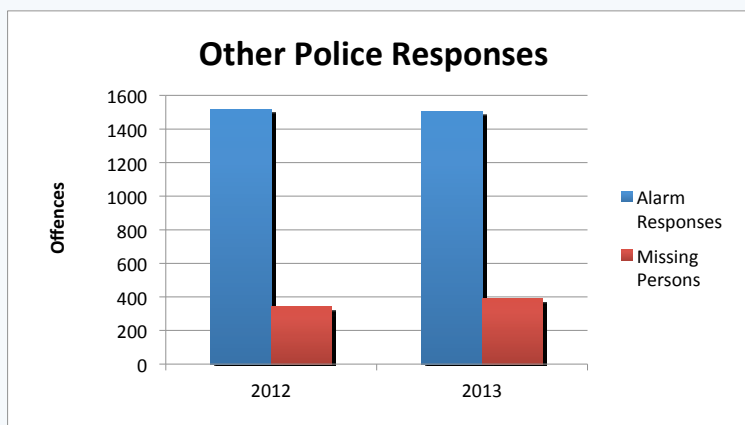
	INCIDENTS REPORTED				CLEARED BY CHARGE			CLEARED BY OTHER			UNFOUNDED		RATE	
	2012	2013	Change	%Change	2012	2013	Change	2012	2013	Change	2012	2013	2012	2013
Bomb Threats	1	1	0	0.0%	0	0	0	0	1	1	0	0	0.0%	100.0%
Discharge Firearms	1	1	0	0.0%	0	1	1	0	0	0	1	0	-	100.0%
Discharge Weapon W/Intent	0	1	1	-	0	1	1	0	0	0	0	0	-	-
Dispute With Weapon	7	1	-6	-85.7%	0	0	0	7	1	-6	0	0	100.0%	100.0%
Explosive Substances	1	1	0	0.0%	0	0	0	0	0	0	1	1	-	-
Firearm - Non-Restricted	7	0	-7	-100.0%	2	0	-2	5	0	-5	0	0	100.0%	-
Firearm - Police Use	0	0	0	0.0%	0	0	0	0	0	0	0	0	-	-
Firearm - Prohibited	2	1	-1	-50.0%	0	0	0	1	2	1	0	0	50.0%	200.0%
Firearm - Restricted	3	4	1	33.3%	3	3	0	0	1	1	0	0	100.0%	100.0%
Firearm/Other Offensive Weapon	12	14	2	16.7%	10	11	1	1	0	-1	1	3	100.0%	100.0%
Firearms Documentation/Admin	3	0	-3	-100.0%	3	0	-3	0	0	0	0	0	100.0%	-
Firearms Seized	12	8	-4	-33.3%	4	6	2	7	3	-4	0	0	91.7%	112.5%
Person With Gun	28	19	-9	-32.1%	7	0	-7	20	19	-1	1	0	100.0%	100.0%
Possess Offensive Weapon	78	73	-5	-6.4%	80	72	-8	0	0	0	1	1	103.9%	100.0%
Possess Prohibited Weapon	20	16	-4	-20.0%	16	15	-1	2	2	0	0	1	90.0%	113.3%
Possess Restricted Weapon	10	7	-3	-30.0%	12	6	-6	0	1	1	0	0	120.0%	100.0%
Unauth Import/Export Weapons	0	0	0	0.0%	0	0	0	0	0	0	0	0	-	-
Unsafe Storage Of Firearms	15	6	-9	-60.0%	9	5	-4	4	0	-4	3	1	108.3%	100.0%
Using Firearm or Imitation in commission of offence	9	2	-7	-77.8%	10	2	-8	0	0	0	0	0	111.1%	100.0%
Weapons Poss Contrary To Order	6	4	-2	-33.3%	6	4	-2	0	0	0	0	0	100.0%	100.0%
Weapons Trafficking	1	0	-1	-100.0%	1	0	-1	0	0	0	0	0	100.0%	-
Subtotal	216	159	-57	-26.4%	163	126	-37	47	30	-17	8	7	101.0%	102.6%
Federal Acts General	1	2	1	100.0%	1	2	1	0	0	0	0	0	100.0%	100.0%
Fail to Comply - Youth Criminal Justice Act	144	99	-45	-31.3%	134	93	-41	6	2	-4	6	3	101.4%	99.0%
Trespass - Railway Act	0	1	1	-	0	1	1	0	0	0	0	0	-	100.0%
Firearms Act	1	0	-1	-100.0%	0	0	0	1	0	-1	0	0	100.0%	-
Provincial Acts General	19	16	-3	-15.8%	16	15	-1	3	1	-2	0	0	100.0%	100.0%
Youth Tobacco Act	32	25	-7	-21.9%	30	24	-6	2	1	-1	0	0	100.0%	100.0%
Child, Youth & Family Enhancement Act	0	2	2	-	0	1	1	0	0	0	0	1	-	100.0%
Public Health Act	10	2	-8	-80.0%	9	2	-7	1	0	-1	0	0	100.0%	100.0%
Subtotal - Other Acts	207	147	-60	-29.0%	190	138	-52	13	4	-9	6	4	101.0%	99.3%
Total Other Offences:	423	306	-117	-27.7%	353	264	-89	60	34	-26	14	11	101.0%	101.0%



OTHER POLICE RESPONSES

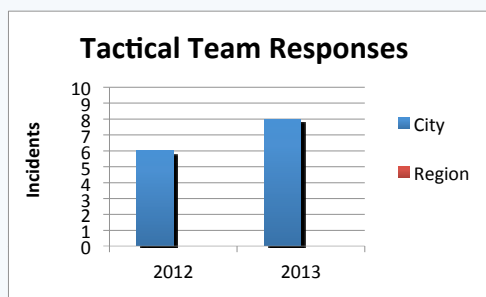
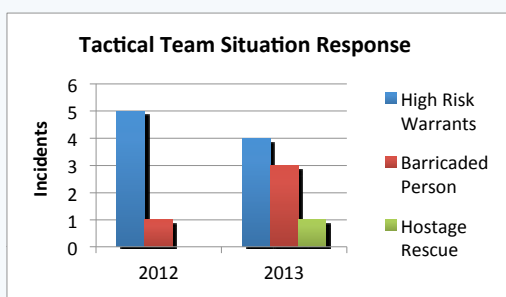
Alarms	2012	2013	Change	%Change
False Alarm	1501	1481	-20	-1.3%
False Fire Alarms	3	3	0	0.0%
Genuine Alarm (by UCR)	15	23	8	53.3%
Total Alarm Responses:	1519	1507	-12	-0.8%

Missing Persons	2012	2013	Change	%Change
Eloped Juvenile - Female	31	8	-23	-74.2%
Eloped Juvenile - Male	76	7	-69	-90.8%
Missing Pers Juv - Female	103	109	6	5.8%
Missing Pers Juv - Male	86	155	69	80.2%
Subtotal	296	279	-17	-5.7%
Eloped Mental Patient	2	0	-2	-100.0%
Missing Pers Adult - Female	23	62	39	169.6%
Missing Pers Adult - Male	22	48	26	118.2%
Total Missing Persons:	343	389	46	13.4%



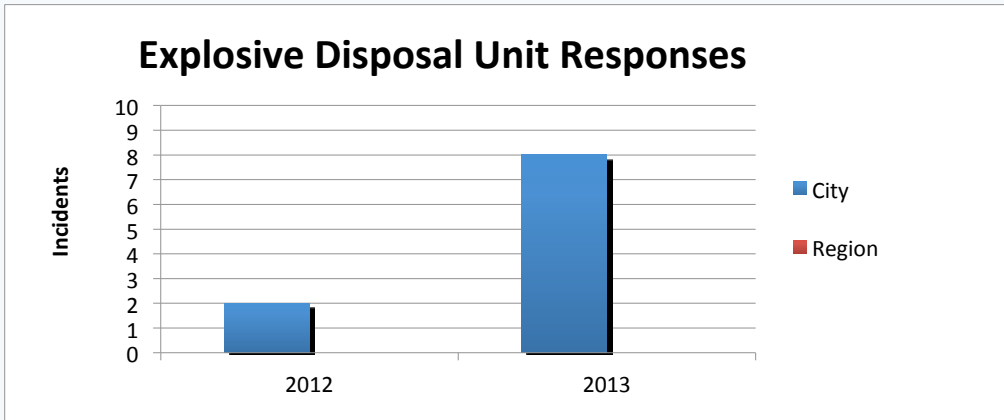
False alarms accounted for approximately 98.5% of the total alarm responses in 2013.

	2012	2013	Change	%Change
Tactical Team Responses:				
City Response	6	8	2	33.3%
Regional response	0	0	0	-
Total Tactical Team Responses:	6	8	2	33.3%
High Risk Warrant Execution	5	4	-1	-20.0%
Barricaded Person	1	3	2	200.0%
Hostage Rescue	0	1	1	-
Total:	6	8	2	33.3%



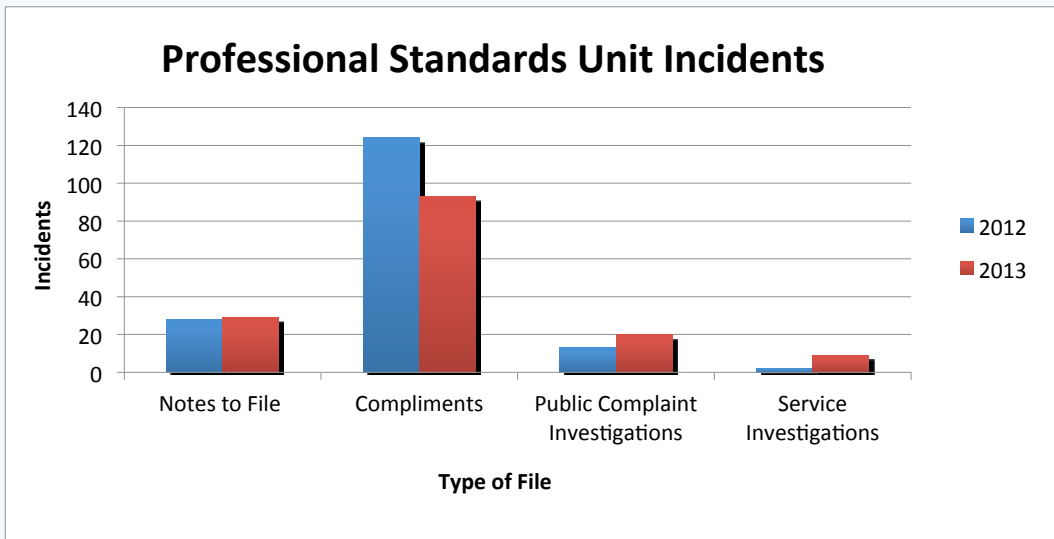
OTHER POLICE RESPONSES

	2012	2013	Change	%Change
Explosives Disposal Unit				
City Response	2	8	6	300.0%
Regional response	0	0	0	-
Total EDU Responses:	2	8	6	300.0%



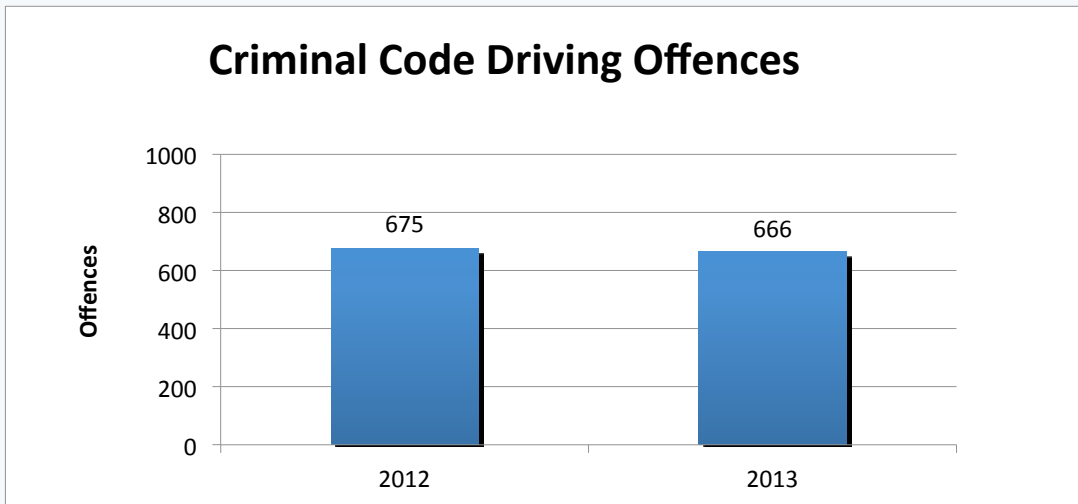
PROFESSIONAL STANDARDS UNIT

Nature of Information Gathered	INCIDENTS REPORTED			
	2012	2013	Change	%Change
Notes to File	28	29	1	3.6%
Compliments	124	93	-31	-25.0%
Public Complaint Investigations	13	20	7	53.8%
Service Investigations	2	9	7	350.0%
Total:	166	151	-15	-9.0%



CRIMINAL CODE DRIVING OFFENCES

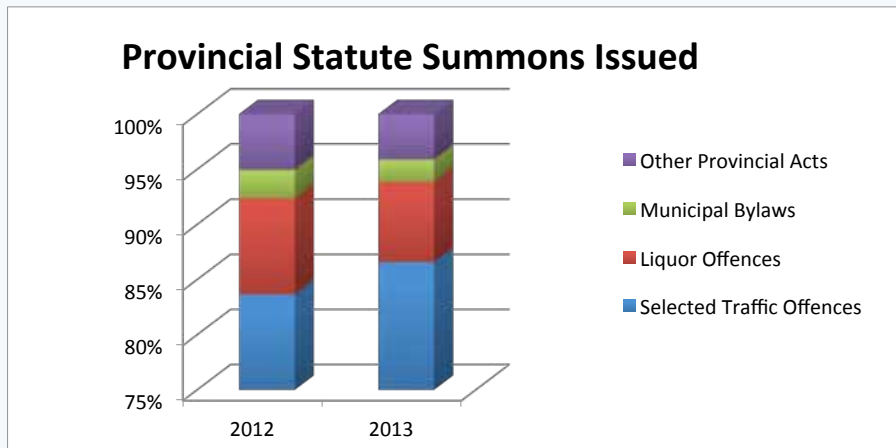
Offence (Drugs)	2012	2013	Change	%Change
Drive Impaired	382	324	-58	-15.2%
Impaired Driving - B.Harm	2	4	2	100.0%
Impaired Driving - Death	0	1	1	-
Dangerous Driving	188	151	-37	-19.7%
Dangerous Driving - B.Harm	2	6	4	200.0%
Dangerous Driving - Death	0	1	1	-
Blood/Alcohol Over .08	3	2	-1	-33.3%
Refuse Blood Sample	1	2	1	100.0%
Refuse Breathalyzer	39	34	-5	-12.8%
Refuse Roadside Screening	11	15	4	36.4%
Danger Drive Evading - B.Harm	0	0	0	0.0%
Danger Drive Evading Police	12	13	1	8.3%
Dangerous Operation/Causing Deaths Evading Police	0	0	0	-
Drive Disqualified	16	31	15	93.8%
Fail to Stop or Remain (Hit & Run)	17	80	63	370.6%
Fail to Stop or Remain - B.Harm (Hit & Run)	1	2	1	100.0%
Fail to Stop or Remain - Death (Hit & Run)	1	0	-1	-100.0%
Total Criminal Driving Offences:	675	666	-9	-1.3%



PROVINCIAL STATUTE SUMMONS ISSUED

	2012	2013	Change	%Change
SELECTED TRAFFIC ENFORCEMENT OFFENCES:				
Suspended Driver	372	279	-93	-25.0%
Careless Driving	373	290	-83	-22.3%
Right of Way to Pedestrian	84	60	-24	-28.6%
Speeding	4904	3691	-1213	-24.7%
Traffic Light Violations	182	184	2	1.1%
Traffic Control Device Violation	1005	676	-329	-32.7%
Fail to Wear Seat Belt	1760	1260	-500	-28.4%
Distracted Driver	1394	1659	265	19.0%
Total Selected Violations Issued:	10074	8099	-1975	-19.6%
Total Conventional Tickets Issued	19473	15818	-3655	-18.8%

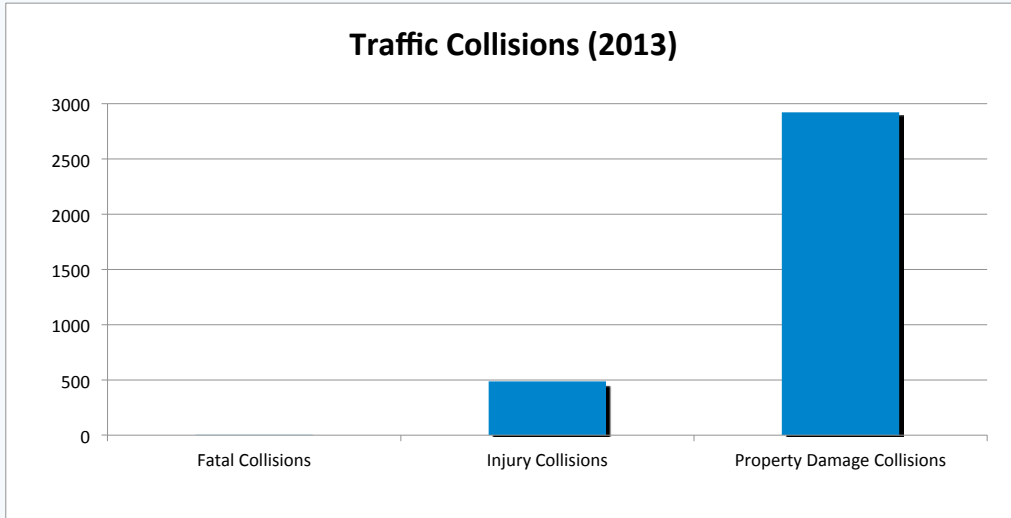
	2012	2013	Change	%Change
SUMMONS ISSUED BY ACT				
Traffic Safety Act	17507	14564	-2943	-16.8%
Gaming and Liquor Act	1050	680	-370	-35.2%
Bylaws	309	191	-118	-38.2%
Criminal Code	2	0	-2	-100.0%
Controlled Drug and Substance Act	1	0	-1	-100.0%
Dangerous Goods	8	2	-6	-75.0%
Enviro Prot Act	171	134	-37	-21.6%
Fuel Tax Act	0	0	0	-
Highways Development Act	0	0	0	0.0%
Innkeeper's Act	1	0	-1	-100.0%
Insurance Act	0	1	1	-
Petty Trespass Act	368	191	-177	-48.1%
Public Health Act	6	1	-5	-83.3%
Residential Tenancies Act	0	0	0	-
School Act	11	0	-11	-100.0%
Tobacco Reduction Act	0	15	15	-
Tobacco Tax Act	0	0	0	-
Wildlife Act	0	0	0	-
Prevention of Youth Tobacco Use Act	39	39	0	0.0%
Total Summons Issued:	19473	15818	-3655	-18.8%



TRAFFIC COLLISIONS

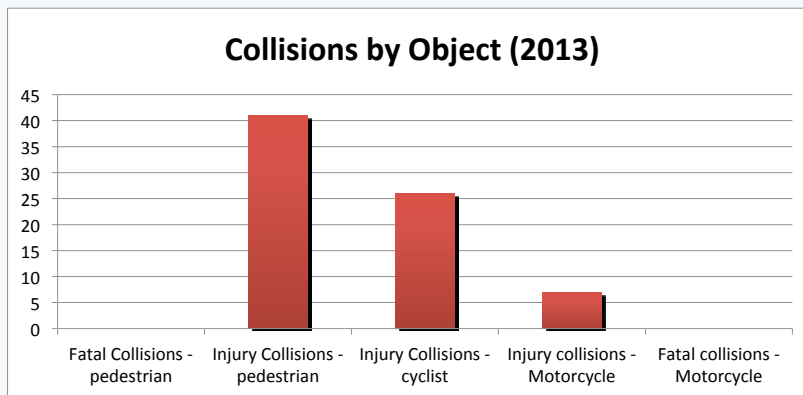
	2013
Fatal Collisions	1
Injury Collisions	486
Property Damage Collisions	2922
Total Collisions:	3409

The Collision Reporting Centre opened its doors in the fall of 2012. This initiative brought with it a new software program and more detailed method of data collection. As such, 2013 data from the CROMS Analytics Portal will provide the baseline statistics for upcoming years of collision data. No comparable data is available for the 2012 calendar year.



Collisions involving Pedestrians/Cyclists/Motorcycles

	2013
Fatal Collisions - pedestrian	0
Injury Collisions - pedestrian	41
Hit & Run Collisions Fatality - pedestrian	0
Injury Collisions - cyclist	26
Injury collisions - Motorcycle	7
Fatal collisions - Motorcycle	0
Total:	87



In 2013, there were a total of 41 collisions that involved pedestrians; twelve of these were hit and run. There were 26 collisions involving cyclists, only one of which was a hit and run. There were a total of 7 collisions involving motorcycles.

